

DAKOSY – PCS and Solution Provider

Evelyn Eggers, Director Sales Department

DAKOSY Datenkommunikationssystem AG

Mattentwiete 2, 20457 Hamburg

Telefon: +49 / 40 / 37 00 3 – 0

Basler Straße 115, 79115 Freiburg i.Br.

Telefon: +49 / 761 / 4787 – 182

www.dakosy.de, info@dakosy.de



1. DAKOSY

- ✓ PCS
- ✓ Network for the supply chain
- ✓ Port Cloud
- ✓ Single Window @ DAKOSY

2. Company profile

3. Single Window DAKOSY

- ✓ Export
- ✓ Import
- ✓ PRISE – Port River Information System Elbe
- ✓ Carrier / Liner Agents

4. EU

- ✓ EPCSA – European Port Community System Association
- ✓ Directive 2010/65

... besides its role as the
Port Community System (PCS) for Hamburg
services and solutions for the whole supply chain
with the main focus on....

EDI

Solutions for international electronic business communication

Customs

Solutions for customs clearance

Forwarding

Solutions for international forwarding (air and sea)

Carrier

Solutions for intermodal transport

Dangerous Goods

Solutions for dangerous goods handling

Network – connecting the supply chain

DAKOSY



DAKOSY Port Cloud

DAKOSY



> 2,000 companies

UN Recommendation No 33 (2005)

- *„... a facility that allows parties involved in trade and transport to lodge **standardized information and documents** with a **single entry point** to fulfil all **import, export and transit-related regulatory requirements**. If information is electronic, then individual **data elements** should only be **submitted once**.„*

A **P**ort **C**ommunity **S**ystem is a very special kind of Single Window, it...

- *.. is a neutral and open electronic platform enabling intelligent and secure exchange of information between public and private stakeholders in order to improve the competitive position of the sea and air ports' communities;*
- *...optimises, manages and automates port and logistics efficient processes through a single submission of data and connecting transport and logistics chains.*

(Source: <http://www.epcsa.eu/port-community-systems/pcs-definition>)

Company profile

DAKOSY

Name and Adress: DAKOSY
Datenkommunikationssystem AG
Mattentwiete 2, 20457 Hamburg
Telefon: +49 / 40 / 37003-0
Telefax: +49 / 40 37003-370
<http://www.dakosy.de>, email: info@dakosy.de

Management Board: Mr. Dieter Spark, Mr. Ulrich Wrage

Established: 1982

Subsidiary: CargoSoft GmbH

Employees: 220

Capital: 1.53m Euro

Shareholder: Seaport Industry

Turnover 2012: 26m Euro

Service times: 24 hours / day
7 days / week

Shareholder of DAKOSY

DAKOSY

33,3 % DIHLA: DAKOSY Interessengemeinschaft Hamburger **Linienagenten GmbH**

examples:



33,3 % DIHS: DAKOSY Interessengemeinschaft Hamburger **Spediteure GmbH**

examples :



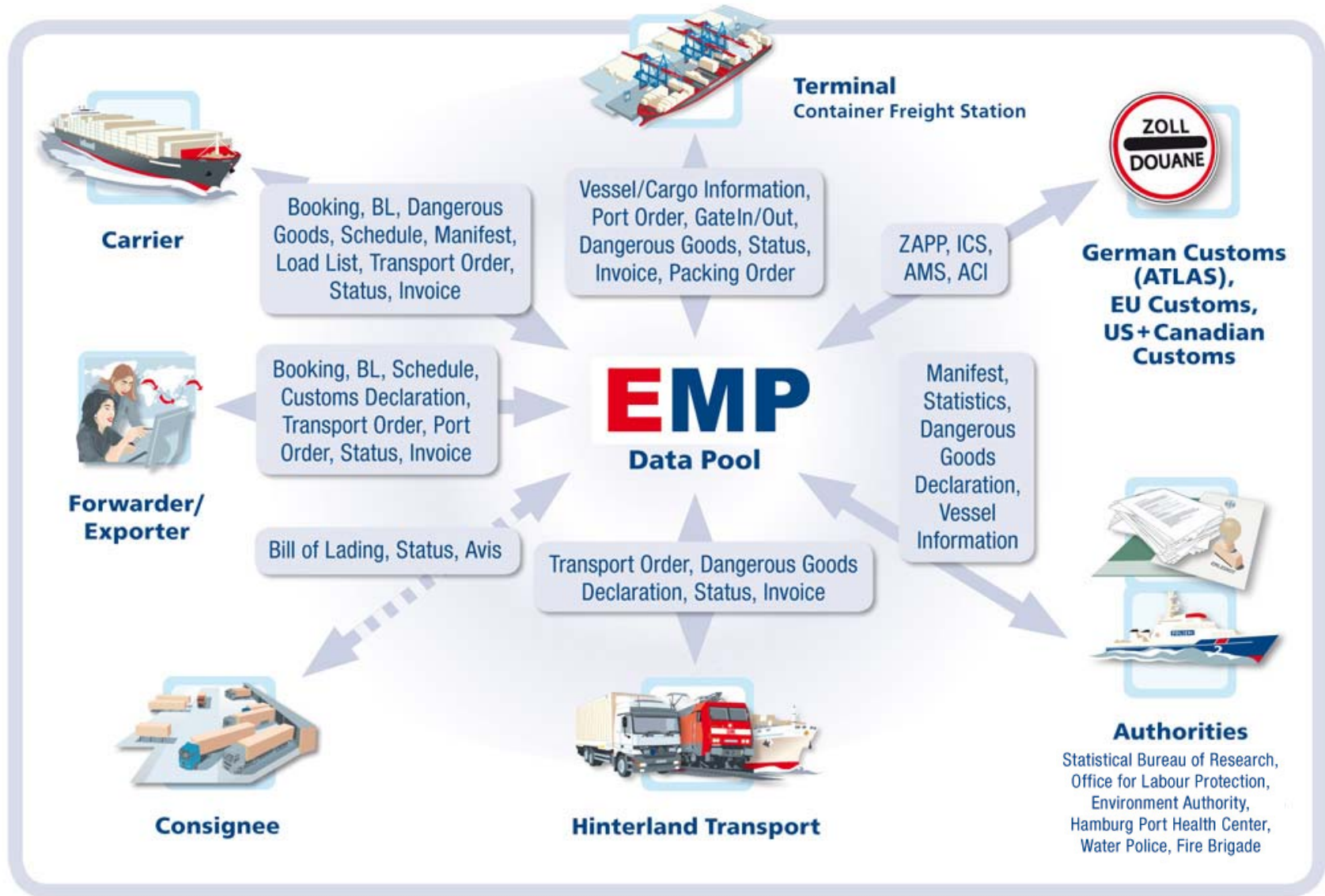
33,3 % DHU: DAKOSY Interessengemeinschaft Hamburger **Umschlagsbetriebe GmbH**

examples :

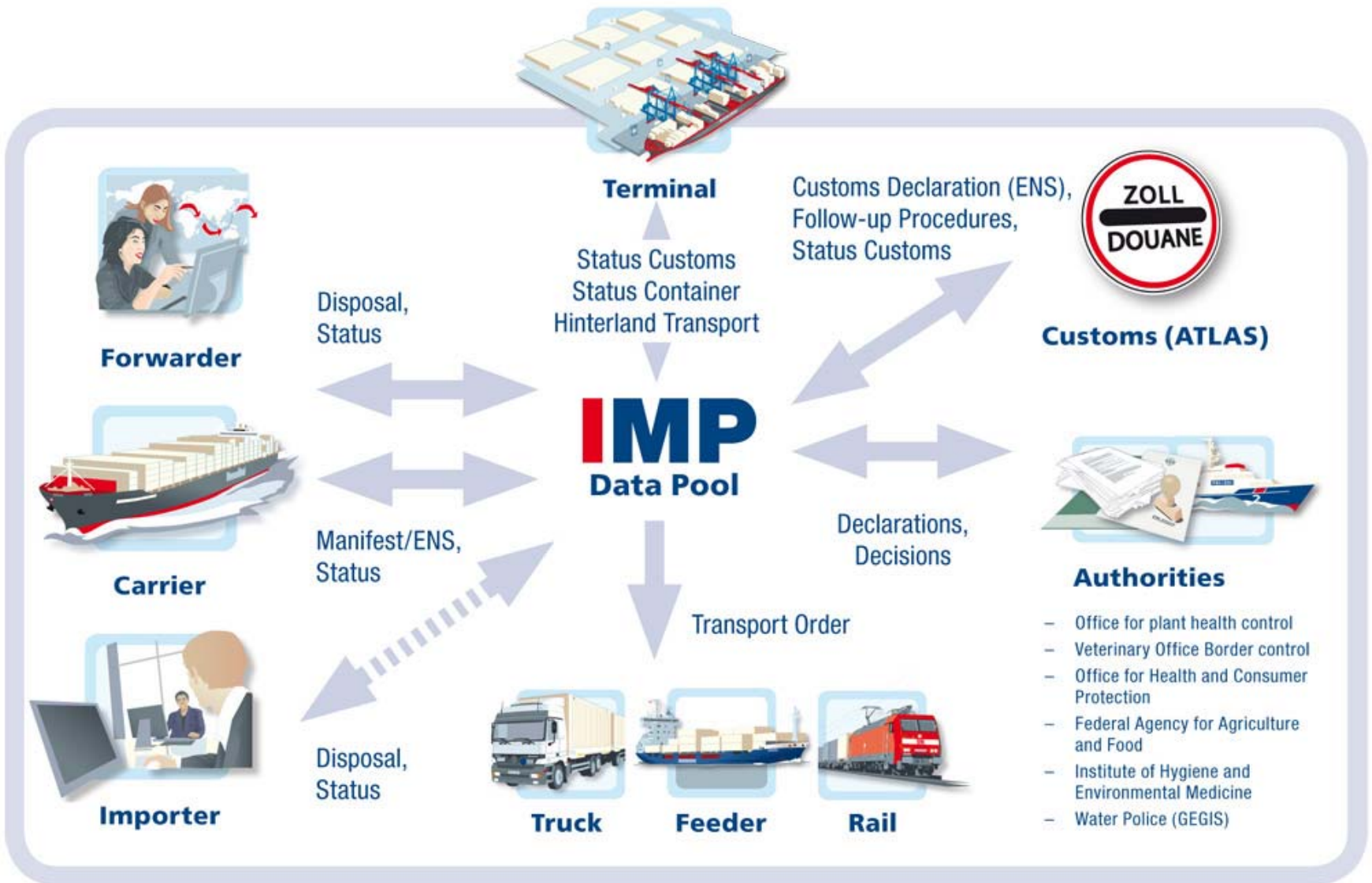


Single Window DAKOSY - Export

DAKOSY



Single Window DAKOSY - Import

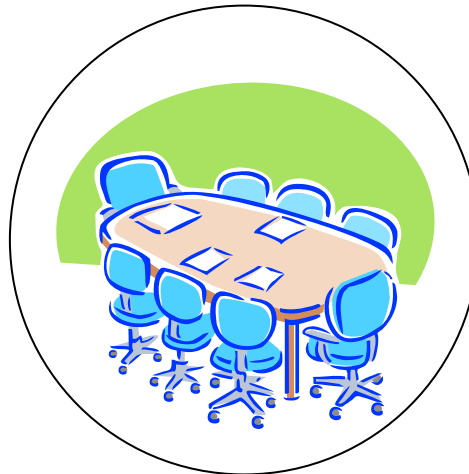




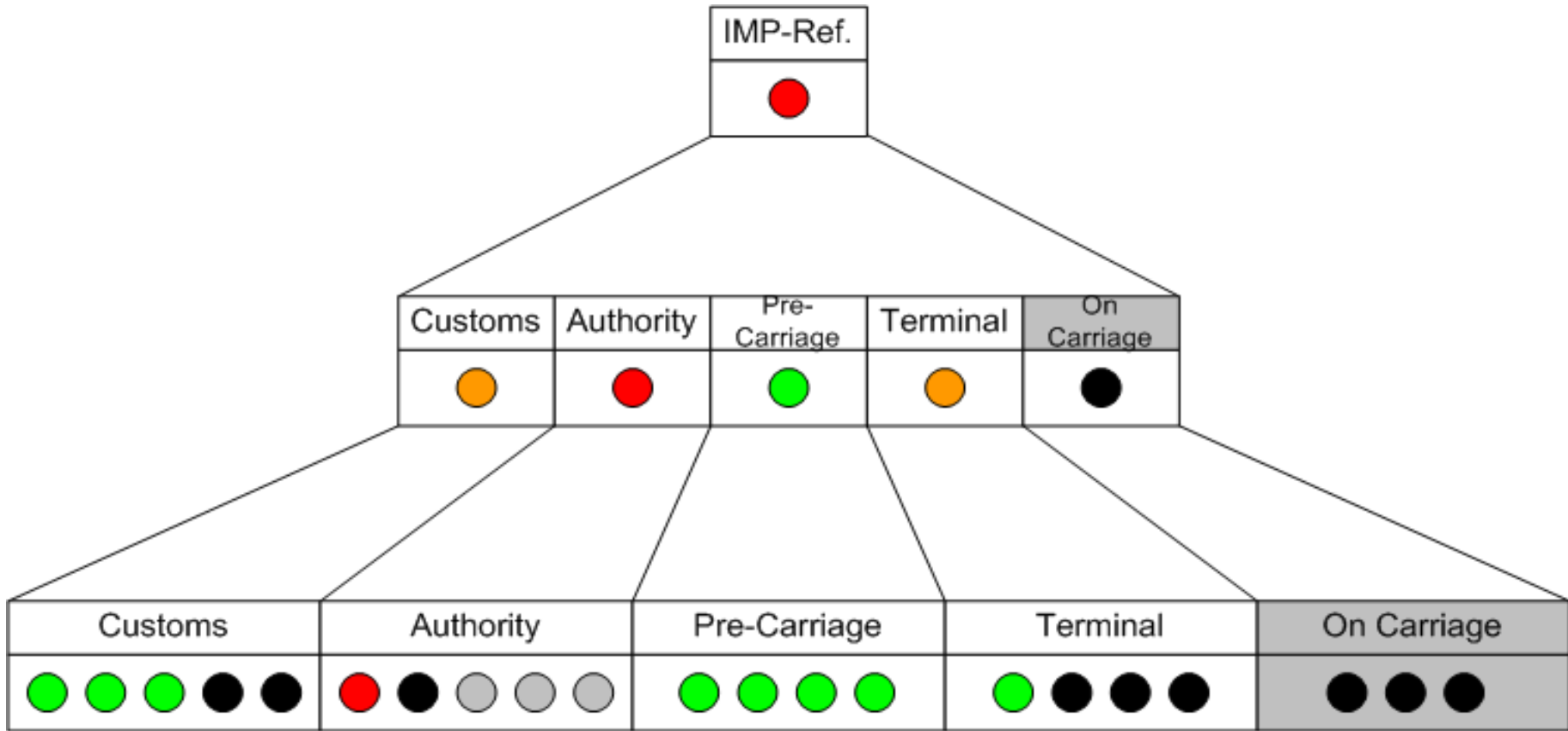
IMP
IMPORT MESSAGE PLATFORM

- **IMP integrates import workflows of carriers, forwarders, customs, water police and government agencies**
- **The impetus for development came from one of the permanent working groups of DAKOSY**

Setup of a working group



The target: an IMP – Control Panel



- black : Initial status, import reference without any actions yet
- orange : Processing
- red : Alert, process has been interrupted by customs or authority
- green : Step has been finished successfully.
- blue : Process closed. Messages will no longer be accepted.
- grey : Status irrelevant.

IMP-Direct - Windows Internet Explorer

http://ser-edt-xen-1.dakosy.de:8080/IMPWeb/html/importInformation/ImportInformationList.jsf

IMP-Direct

Sascha Gerl
DAKOSY

IMP IMPORT MESSAGE PLATFORM

DAKOSY IMP Verfügungen Manifeste Zoll Behörden Einstellungen

Verfügungsliste Aktualisieren

Container	IMP-Ref	B/L-Nr	Terminal	Carrier	Weitertransport	VT	LOT	Freist.	Man.	Status	Aktionen
CTLU3355668	IHH100318100000057	BLNUMR2	DKY	HLCU		Seeschiff	-	-	-	●	
CTLU3355668	IHH100318100000020	BLNUMR2	DKY	HLCU		Seeschiff	-	-	-	●	
CTLU2255664	IHH100318100000015	BLNUMR	DKY	HLCU		Seeschiff	-	-	-	●	
MM9876543210	IHH100316100000021	MM1003161403	DKY	HLCU		tbn	-	-	-	●	
DAYU1234568	IHH100310100000019	DE36725	DKY	APLS		Seeschiff	-	-	-	●	
MM1	IHH100308100000040	MM1003081025	EUR	HLCU		tbn	-	-	-	●	
MM12	IHH100308100000055	MM1003081024	EUR	HLCU		tbn	-	-	-	●	
MM123	IHH100308100000013	MM1003080900	EUR	HLCU		tbn	-	-	-	●	
MM12345	IHH100304100000015	MM1003041419	EUR	HLCU		tbn	-	-	-	●	
MM1234	IHH100305100000010	MM1003051010	EUR	HLCU		tbn	-	-	-	●	
MM123456	IHH100303100000236	MM1003031412	DKY	HLCU		tbn	-	-	-	●	
MM1234567	IHH100303100000220	MM1003031409	DKY	HLCU		tbn	-	-	-	●	
MM12345678	IHH100303100000215	MM1003031405	DKY	HLCU		tbn	-	-	-	●	
MM123456789	IHH100303100000215	MM1003031402	DKY	HLCU		tbn	-	-	-	●	
MM1234567890	IHH100303100000191	MM1003031354	DKY	HLCU		tbn	-	-	-	●	
21111111		HLAG12345678	DKY	HLCU		tbn	-	-	-	●	
11111111	IHH100303100000165	HLAG1234567	DKY	HLCU		tbn	-	-	-	●	

Filter zurücksetzen << < > >>

© 2010 DAKOSY AG - Impressum DAKOSY

Fertig Internet 100%

Ship in approach



- Ship positions (ETA)
- Status information “Delays”
- Authorities’ decisions

Handling in the harbour



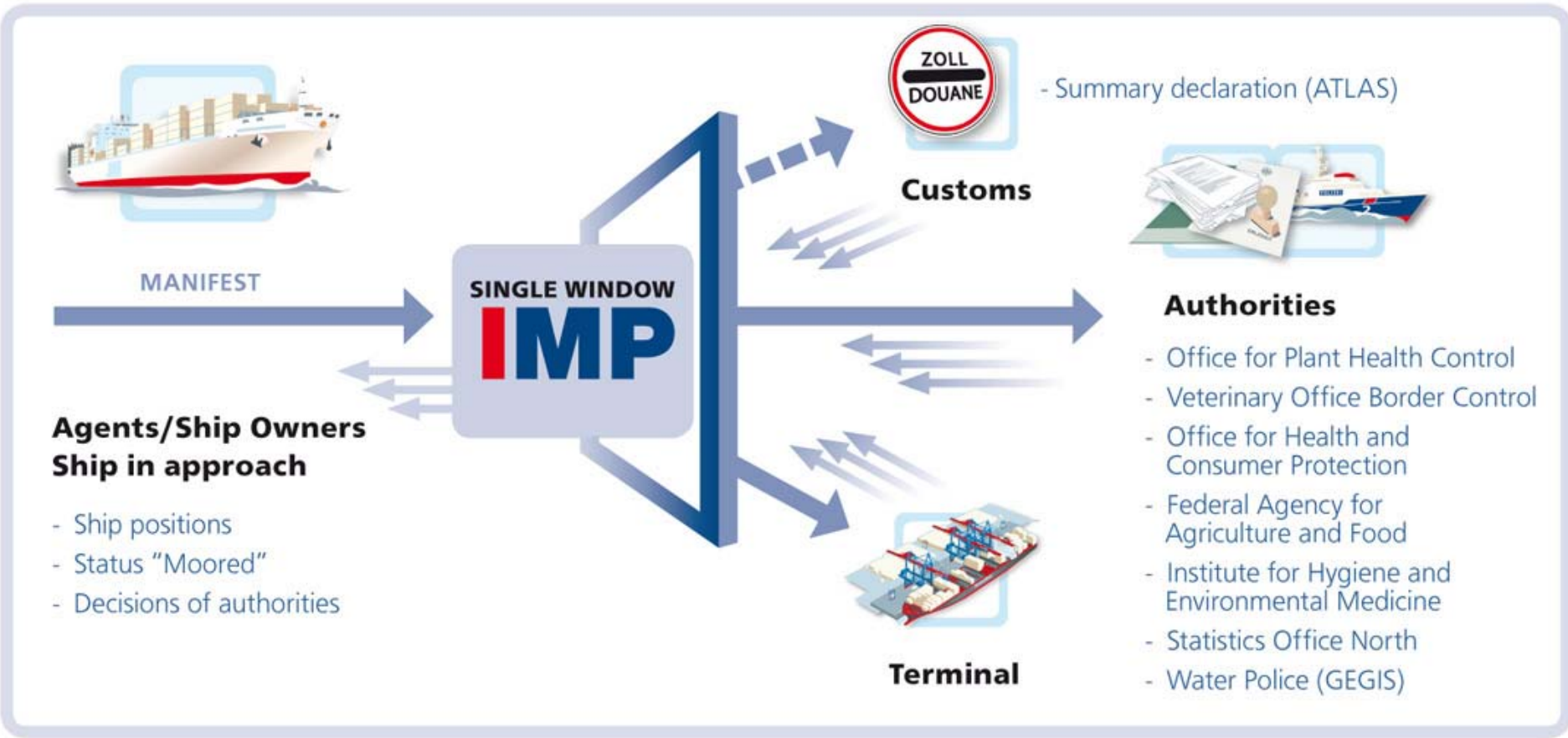
- Status information Terminal
“Discharge”, “Gate Out”
- Gate Pass/Release by the carrier
- Status information authorities,
e.g. customs clearance
- Transport order to carrier
- Status information on-carriage

Hinterland transport



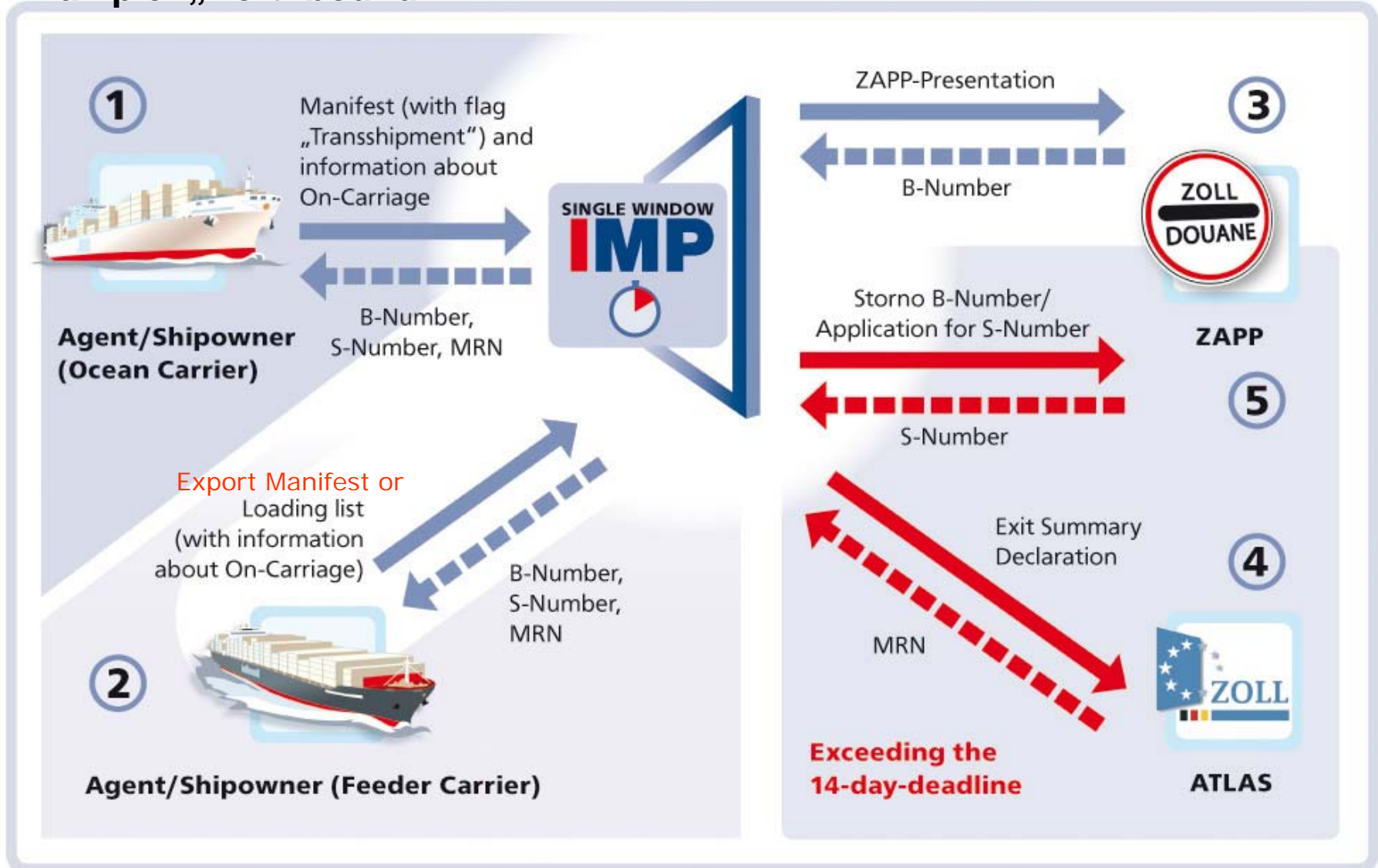
- Information on-carriage
Train, truck, feeder
- Status information
“Delays”, “Delivered”

IMP - benefits for Carrier



IMP - benefits for Carrier

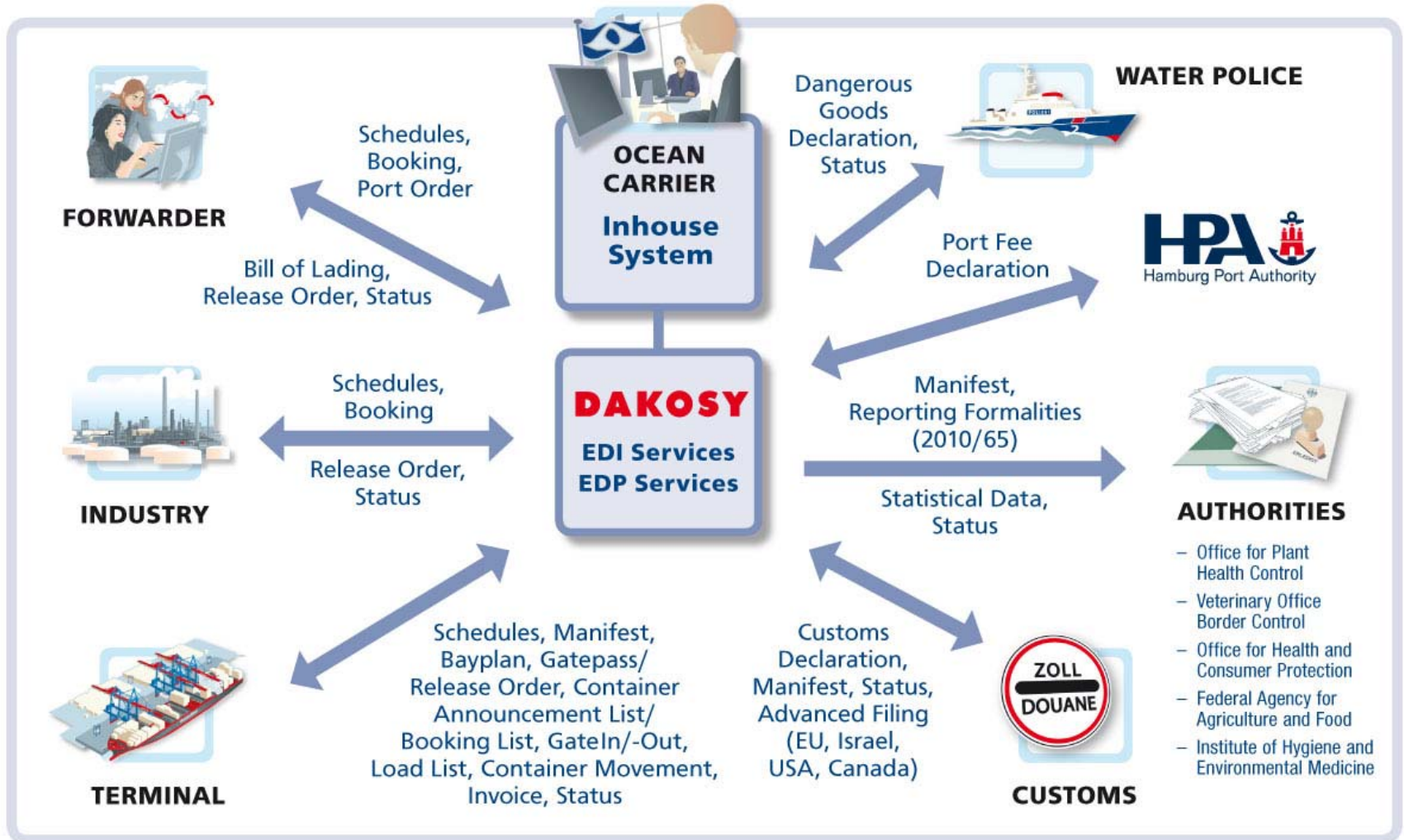
Example: „Northbound“



Single Window for Carrier



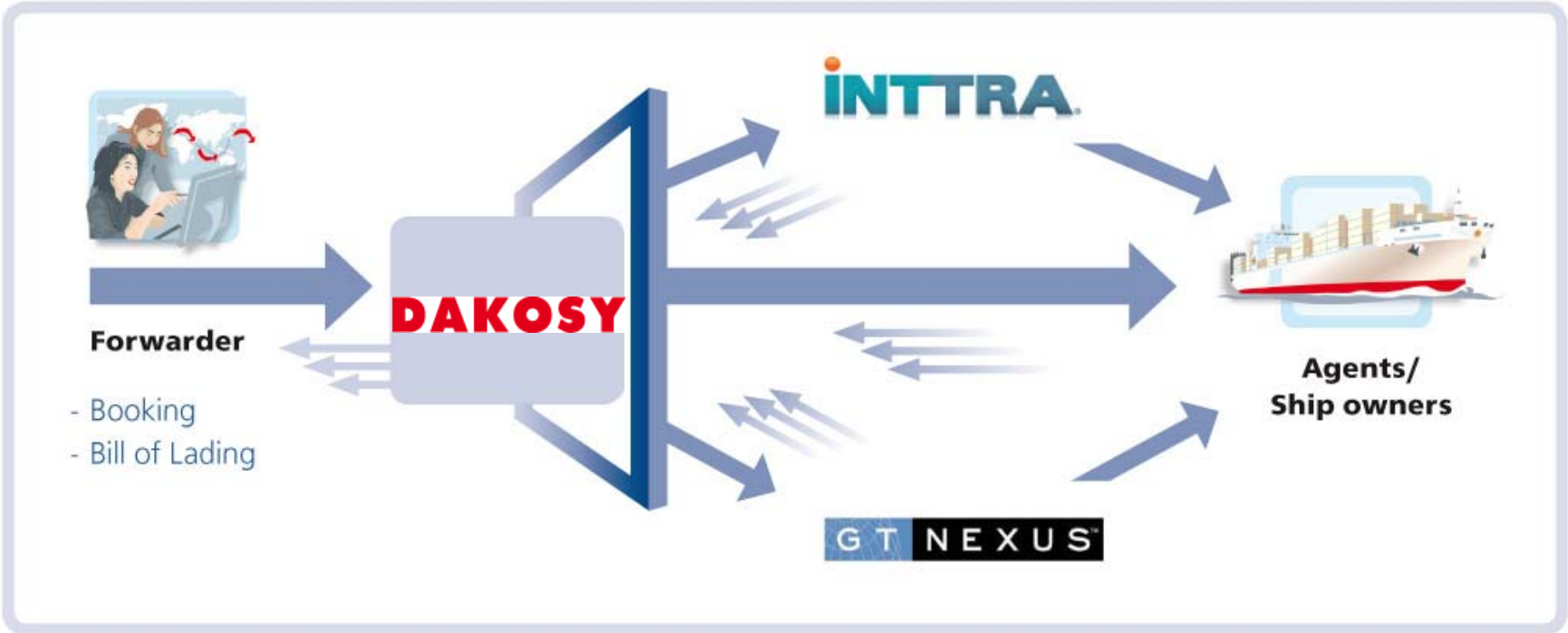
DAKOSY



Maintenance and further development of the interfaces by
[Working group „Schifffahrt + Logistik“](#)



Booking/Bill of Lading via DAKOSY



Prise - Port River Information System Elbe

DAKOSY



Prise - Port River Information System Elbe

DAKOSY

Liegeplatz-Meldungen ETA-Liste Vorhersagen **Schiffspositionen** Einstellungen Administration Hilfe Support Abmelden Anton Kunze (DAK)

PRISE

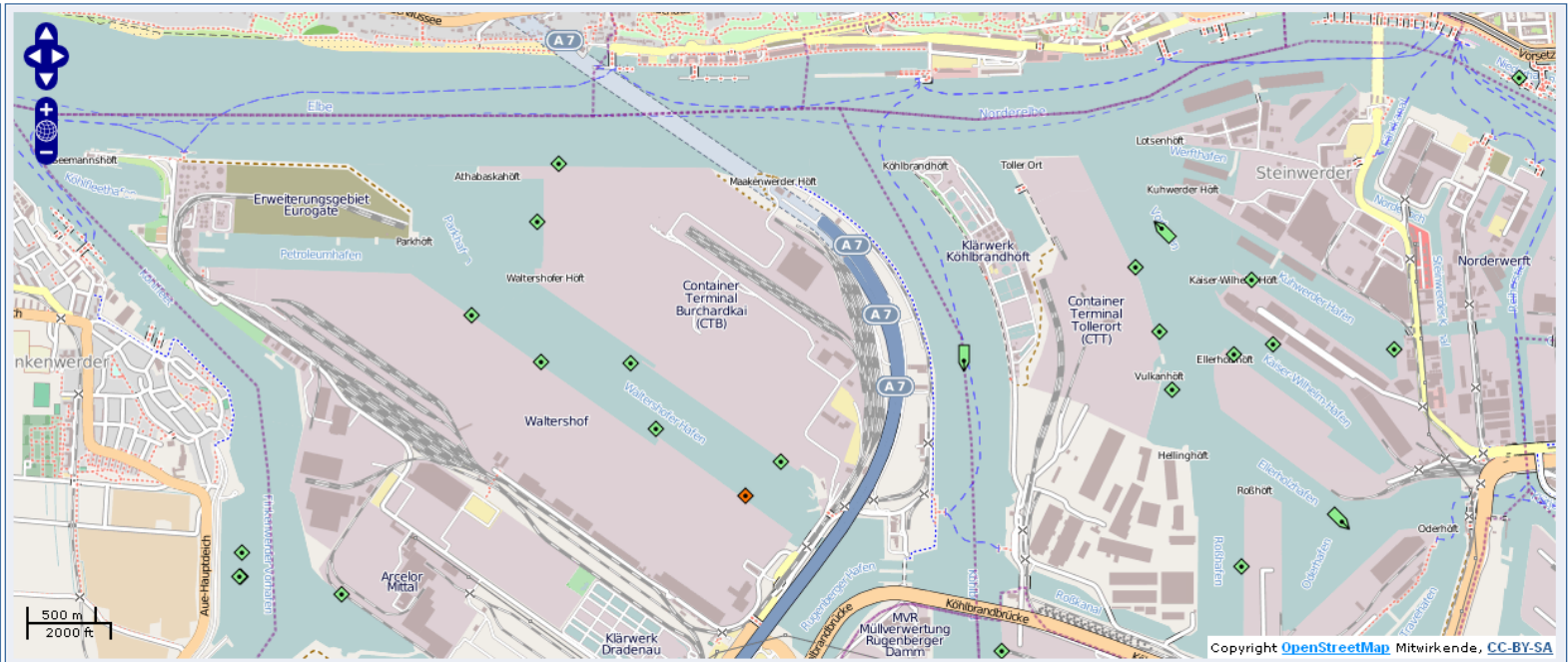
Schiffspositionen

PRISE-Schiffe
 Frachtschiffe
 Lotsen
 Aktualisierungsintervall (Minuten):

Sonstige
 Schlepper
 Aktualisieren

Elbe und Umgebung

- A LA MARINE
- ADMIRAL
- ANJA C
- ANKE ANGELA
- ANMIRO
- APL DUBLIN**
- ARKLOW BROOK
- ASIAN BREEZE
- ATLANTIC EAGLE
- BALTIC SAILOR
- BALTICBORG
- BF AURELIA
- BIANCA RAMBOW**
- CAP RICARDA**
- CAP SAN DIEGO
- CAPELLA
- CARAT**
- CECILIE
- CENSUS
- CHIPOLBROK GALAXY
- CHRISTOPHER**
- CITY OF HAMBURG
- COASTAL LIBERTY
- CONGER
- CONTI ARABELLA**
- COSCO PRIDE**
- CSAV LLUTA**
- CSCL MARS**
- DELIA
- DORNBUSCH**
- ECL CHALLENGER
- ELBE
- ELTERNSEGEN



Konfiguration

letz. Änd.	Schiffsname	IMO	Terminal	ETA-LP ^	ETD	Liegeplatz	Breite	Länge	AGF	Tiefgang	POS	LF	LL	ETA-List	
26.04. 09:11	CSCL MARS	9467287	CTH-Eurogate	P 25.04. 06:00 A	P 26.04. 12:00 A	PRED 1-2 50 - 416	51,20	366,07	Alle	A D	11,20 15,50	LP-Code: PRED 1-2 25.04. 04:55	Alle	Alle	Alle

DAKOSY

Schiffsbegegnungsübersicht Es werden ausschließlich die Schiffe der Containerterminals Eurogate, CTA-HHLA, CTB-HHLA und CTT-HHLA angezeigt.

Filter/Liegeplatz-Simulation

Zeitliche Einschränkung:

Von

Bis

Gezeiten anzeigen

Schiffsdaten ausblenden

Liegeplatz für Simulation hinzufügen

Schiffsname

Schiffsbreite

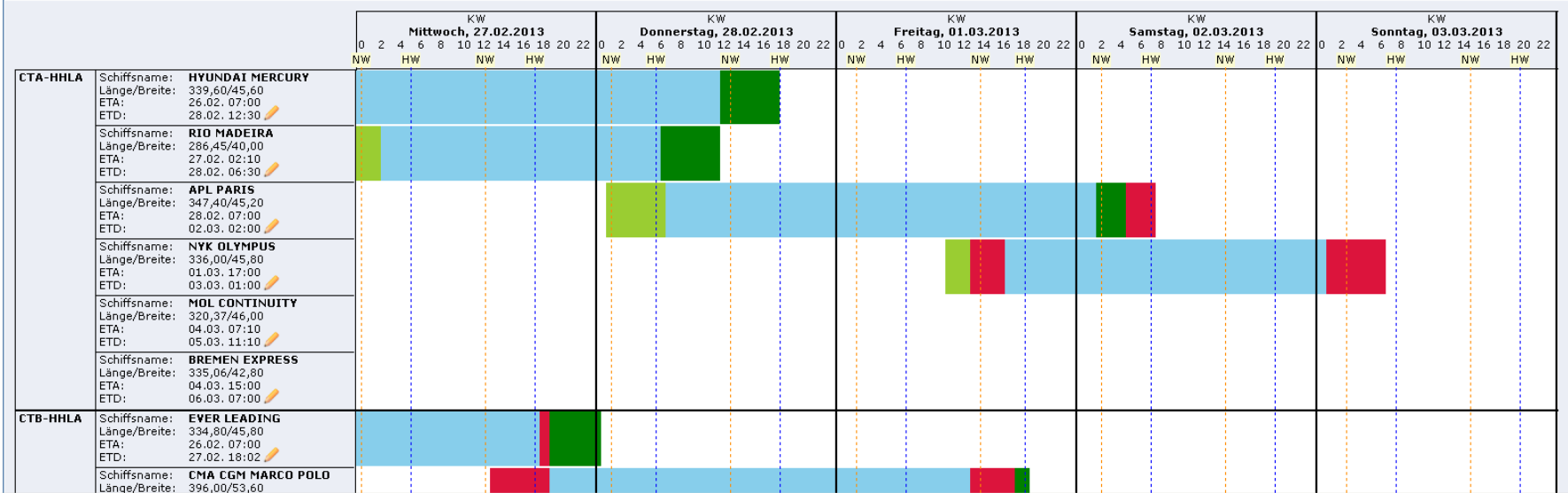
ETA

ETD

Hinzufügen

Bitte beachten Sie, dass das Ändern von vorhandenen Liegeplätzen sowie das Hinzufügen von simulierten Liegeplätzen keine Auswirkungen auf die gemeldeten Liegeplätze in PRISE haben. Es handelt sich hierbei nur um eine Simulation.

Aktualisieren





**GEGIS provides a timely
overview
of all dangerous goods
movements and storages
in the Port**

**GEGIS – Dangerous Goods
Information System**

GEGIS – Monitoring Hazardous Goods in the Port

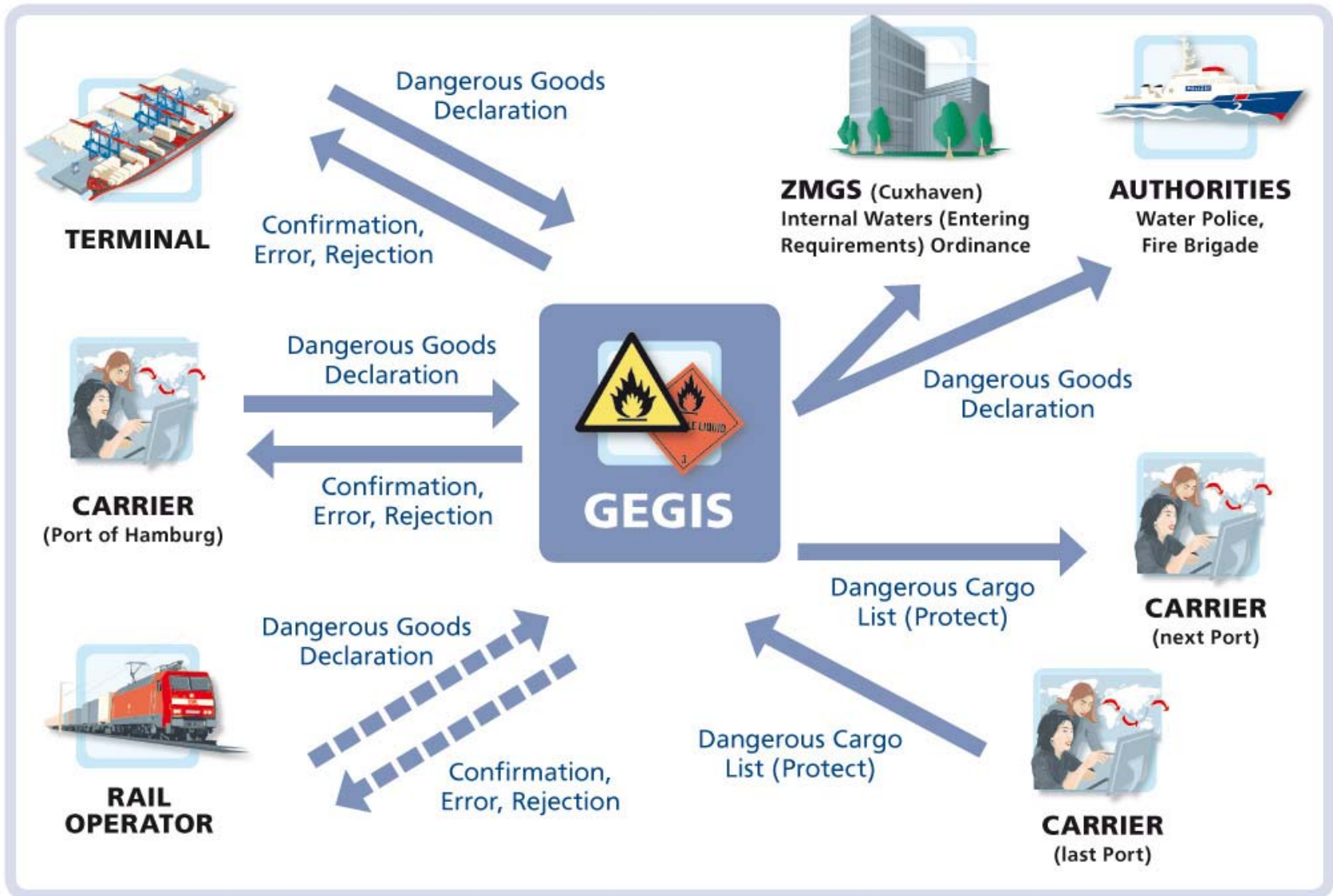
DAKOSY

The screenshot displays the JGegis software interface. The main window is titled 'Geo. Informationssystem' and shows a map of the port area with various streets and waterways labeled, including 'Griesenwerder Höft', 'WALTERSHOFER HAFEN', 'Burchardkai', 'Predjünnkai', and 'Fluro-Kai'. A scale of 20000 and a map type of 'Stadtkarte (1:20.000)' are visible. The status bar at the bottom indicates 'Status JGegis loading completed'.

A 'Schiffsinformationen' (Ship Information) window is open, displaying the following data:

Schiffsdaten	
Funkrufzeichen:	DQWJ
Schiffsname:	PEKING SENATOR
Nationalität:	GE
Schiffstyp:	Containerschiff
BRT:	53,324 BRT
Schiffslänge:	294.00 m
Schiffsbreite:	32.20 m

Buttons for 'Zurück' (Back) and 'Anzeigen' (Show) are located at the bottom of the ship information window. The main interface also features buttons for 'Aktualisieren' (Update), 'Zurück' (Back), and 'Register'.



JGegis
JGegis Gefahrgutanmeldung Stoffdaten und Regelwerke Hilfe

Gefahrgutanmeldung Linienagent

Import	Export
Bearbeitung Anmeldung	Bearbeitung Anmeldung
Abgeschlossene Anmeldungen (Hamburg)	Abgeschlossene Anmeldungen (Hamburg)
Abgeschlossene Anmeldungen (nicht HH)	Abgeschlossene Anmeldungen (nicht HH)

Vorlaufinformationen

Schiffsstammdaten

PROTECT-Protokoll

JGegis
JGegis Gefahrgutanmeldung Gefahrgutsituation Stoffdaten und Regelwerke Adress Hilfe

Import / Transit - Anmeldungen zur Reise

Schiffname: **HAMBURG I** Funkrufzeichen: **DHRE** ETA: **06.12.2005** Status: **im Zulauf**
Partien: **7** mit insgesamt **4153,044 kg**

Übersicht | Details | Karte | Protokoll

Kategorie	Klasse	Menge (kg)
Klasse 1	1.1	0,0 kg
	1.2	0,0 kg
	1.3	0,0 kg
	1.4	400,0 kg
	1.5	0,0 kg
Klasse 2	2.1	0,0 kg
	2.2	450,0 kg
	2.3	0,0 kg
Klasse 3	3.1	611,7 kg
	3.2	0,0 kg
	3.3	0,0 kg
Klasse 4	4.1	0,0 kg
	4.2	0,0 kg
	4.3	0,0 kg
Klasse 5	5.1	0,0 kg
	5.2	1220,0 kg
Klasse 6	6.1	156,0 kg
	6.2	0,0 kg
Klasse 7	7	0,0 kg
	Sonstiges	0,0 kg
Klasse 8	8	1200,0 kg
	9	0,0 kg

Teilnehmercodierte | Drucken | Zurück

JGegis
JGegis Gefahrgutanmeldung Stoffdaten und Regelwerke Hilfe

Regelwerk See (IMDG-Code, 32. Amendment)

UN-Nummer: **1163** Gefahrgutklasse: **6.1** Verpackungsgruppe: **I**
Stoffname: **DIMETHYLHYDRAZINE, UNSYMMETRICAL**

Defahrgutdaten | Namen | Eigenschaften/Spezielle Vorschriften | Stauung | Verpackung/IBC | Tanks & Bulks

Aggregatzustand: **L** Flammpunkt: **-10 °C**
EmS-Fire: **F+** Siedebeginn:
EmS-Spill: **S-C** Siedepunkt:
Limited Quantities: **NONE** PSA-Klasse: **II**
PSA-Zusatzinformationen:

Label: **6.1** **3** **6** Marine Pollutant: **P**

Zurück | Drucken

- **released October 20, 2010**
- **reporting formalities for ships arriving in and/or departing from ports of the Member States**
- **Purpose 1: standardization and harmonization of existing reporting formalities – *Trade Facilitation***
- **Purpose 2: Implementation of National Single Windows (NSW)**
- **Starting 1st of July 2015 the following data has to be filed electronically:**
 1. **General Declaration**
 2. **Cargo Declaration**
 3. **Ship's Stores Declaration**
 4. **Crew's Effects Declaration**
 5. **Crew List**
 6. **Passenger List**
 7. **Dangerous Goods**
 8. **Maritime Declaration of Health**
 9. **Entry Summary Declaration (ENS)**

The mission of EPCSA is to:

“influence public policy in the European Union level in order to achieve e-logistics throughout all European ports, operating as a key element of the EU maritime, shipping and logistics industry.”

(<http://www.epcsa.eu>)

Founding members:

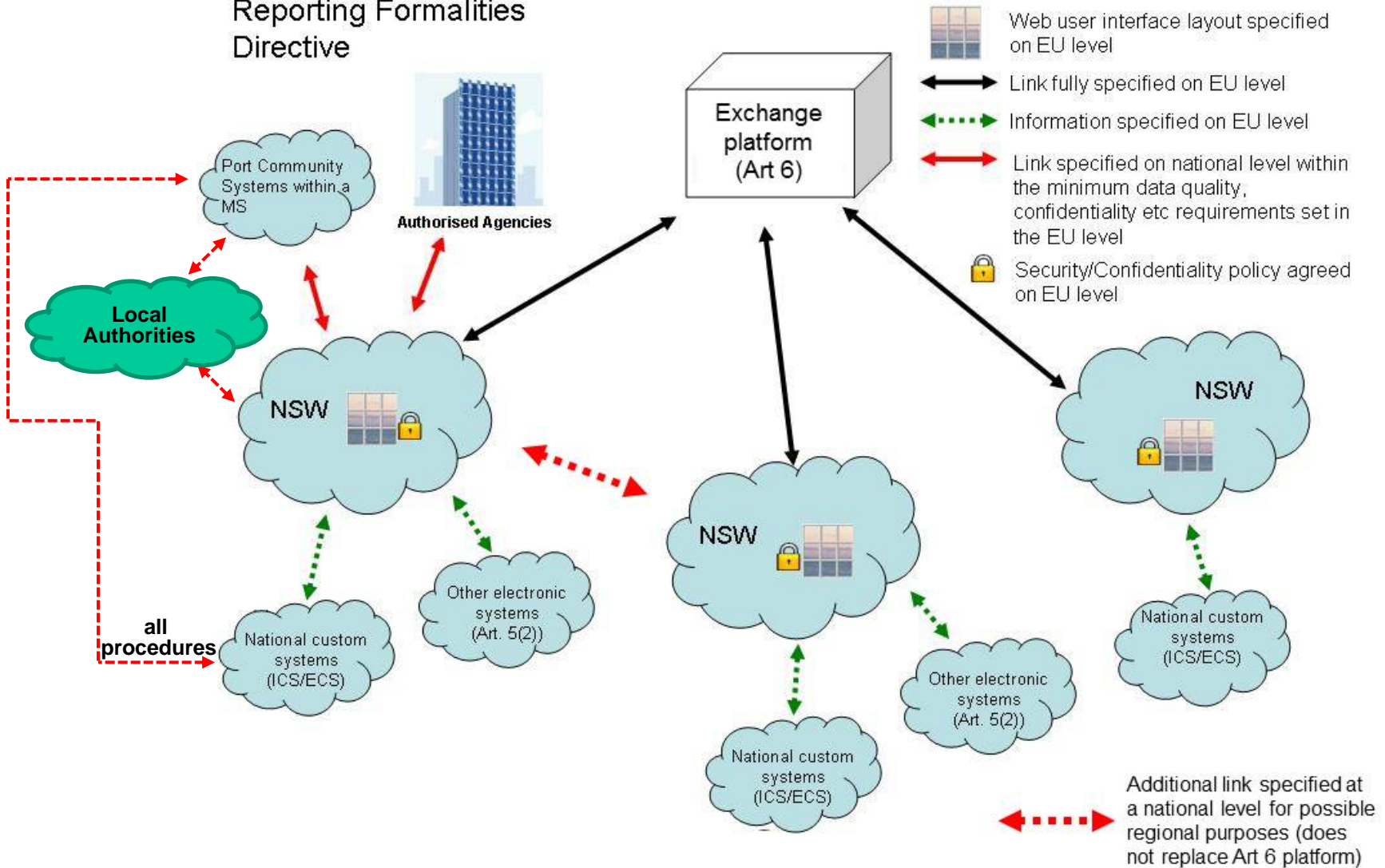
- **SOGET** www.soget.fr
- **Portbase** www.portbase.com
- **MCP** www.mcpplc.com
- **Portic** www.portic.net
- **Dbh** www.dbh.de
- **DAKOSY** www.dakosy.de

Plus 14 associated members

Plus observers

2010/65: National Single Window and PCS

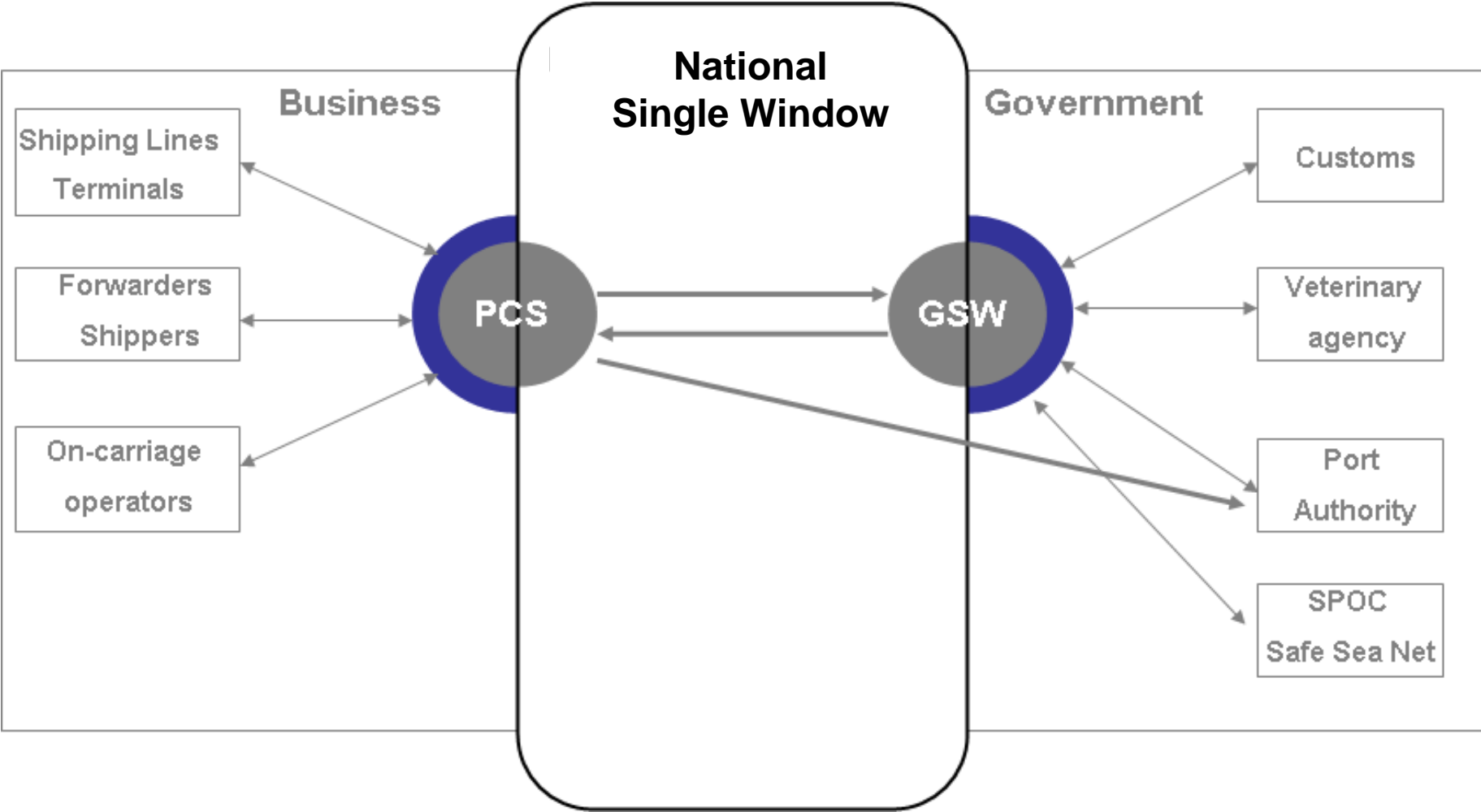
Reporting Formalities Directive



proposal of MOVE D.1 and EMSA (5th. eMS Group Meeting)

- **EPCSA recognises the importance of simplification of port processes**
- **the impact on trade should be limited, any changes to requirements in these processes should be kept to a minimum, any existing infrastructure should be used**
- **Member States should cooperate further to keep the impact of additional administrative burdens for the private sector to a minimum**
- **Business to Business activities should also be outside the scope of the European Commission policy.**
- **Port Community Systems (PCS) could act as a clearing centre for required information thus reducing the need for the industry to invest**
- **EPCSA recommends that e-maritime should be refocused as a trade facilitation policy and as simplification of port processes**

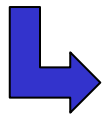
Schematic overview of the Gateway to the NSW



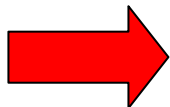
(Source: <http://www.epcsa.eu/policy-and-technical/epcsa-papers/white-paper-the-role-of-pcs-int-he-development-of-national-single-window>)

The Single Window DAKOSY...

- ✓ provides standardised interfaces and processes and guarantees a high reutilisation grade of data
- ✓ provides good planning criteria for all involved parties (thanks to early available data, event-driven and process-controlled)
- ✓ offers optimised tracking & tracing services alongside the whole chain of transport
- ✓ opens a wide range of possible process automation



- **shortened times of transport**
- **optimised usage of resources**
- **helps to be able to match the demands of a strong growth in transport**



... makes the harbour transparent!!

Thank You for Your Attention!

Further Questions? Please refer to:

Evelyn Eggers

DAKOSY Datenkommunikationssystem AG,

Telefon: +49 / 40 / 37 00 3 – 0, E-Mail: eggerts@dakosy.de