



Current Situation in Germany / Hamburg

30. May 2013

Christian Koopmann
German Shipbrokers' Association





The **ZVDS** - founded in 1919 - is the confederation at national level of all ten local shipbrokers' associations in Germany. Thus the ZVDS has a total membership of some 450 companies.

The **ZVDS** provides advisory services and represents the interests of ship brokers and agents vis-à-vis the Federal German authorities, institutions and professional association.



Germany, the fifth largest economy in the world and the largest economy in the Euro-Zone, depends heavily on its exports to drive the economy.

At the same time, due to scarce natural resources Germany also depends on imports – in particular, in the energy sector (mineral oil, natural gas).

In 2012 Germany exported goods worth 1 097.3 billion € and imported goods worth 909.1 billion €.

German GDP rises less than expected in the first quarter 2013 (+0,1%).

The Government expects for 2013 a growth of 0,5% in total (for 2014: 1,6%)

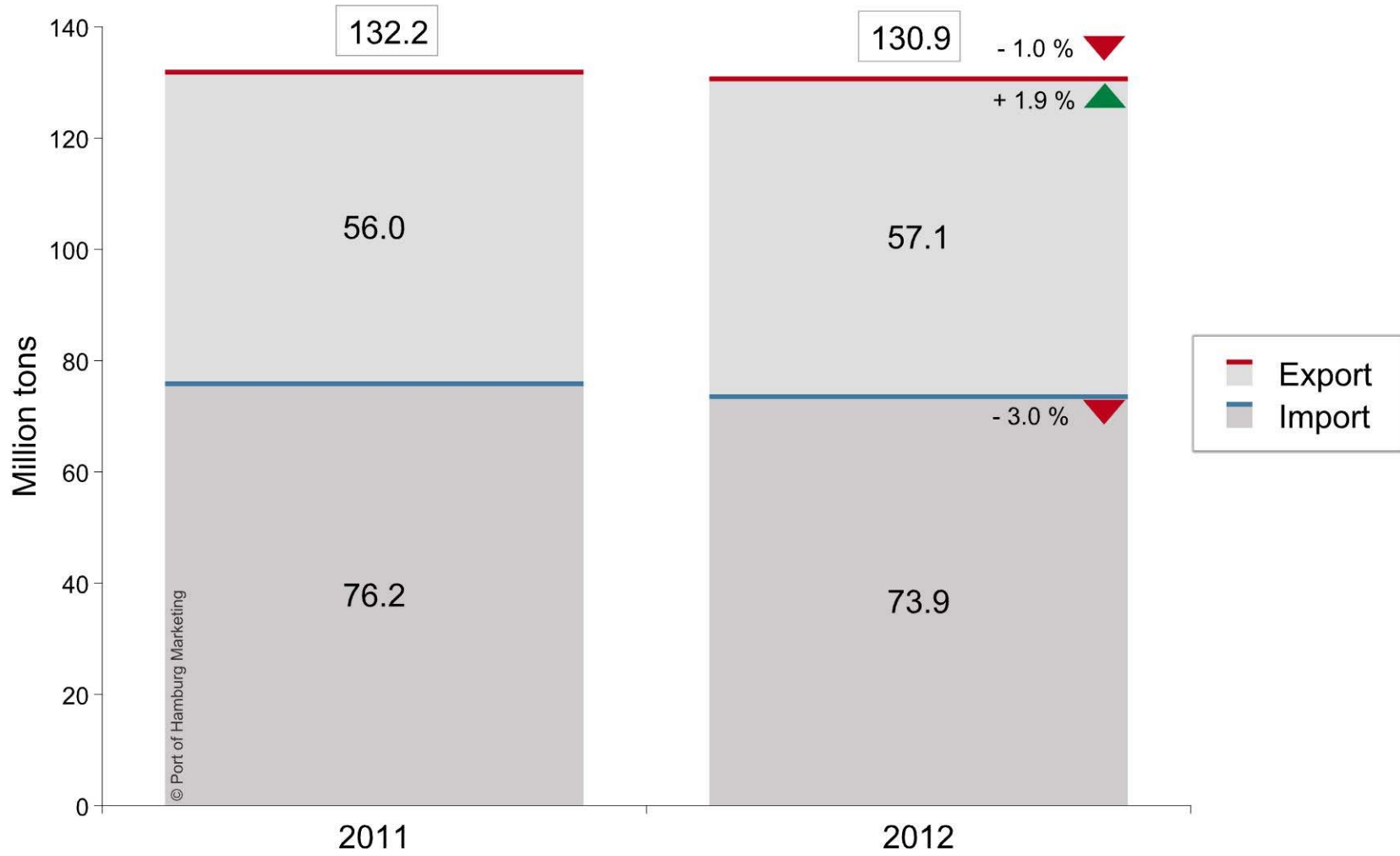
Freight Transshipment rose 1.1%

Maritime Transport 2012 (mio t)			
	2012	2011	Change in %
Absolut	299,4	296,1	1,1
Inter-german transportation	7,3	6,5	11,3
Export	116,3	112,5	3,4
Import	175,9	177,1	-0,7
Container (mio TEU)	15,3	15,3	0,3

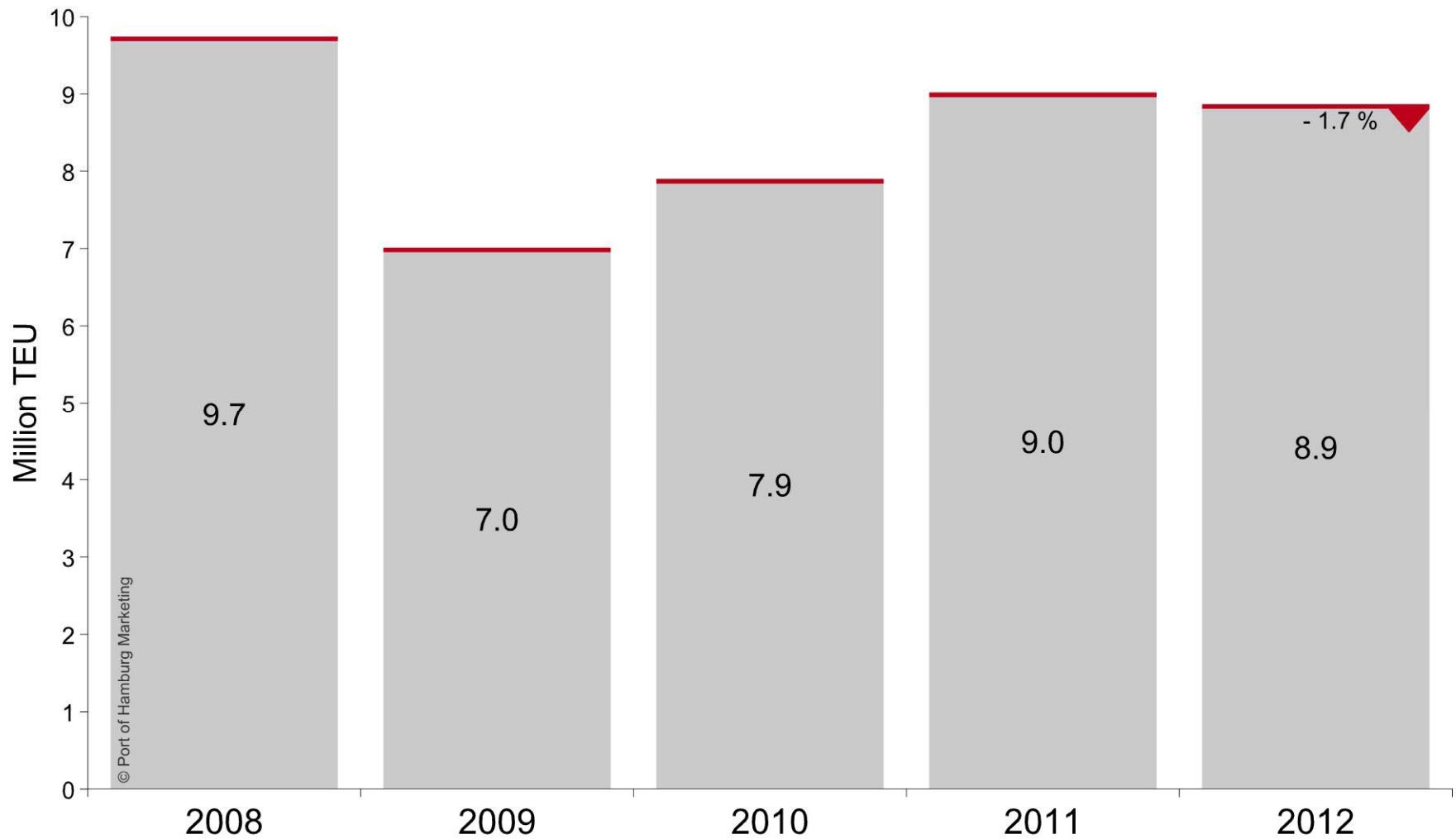
Source: destatis.de

These data does not include hinterlandhubs/ inland ports like the port of Duisburg.

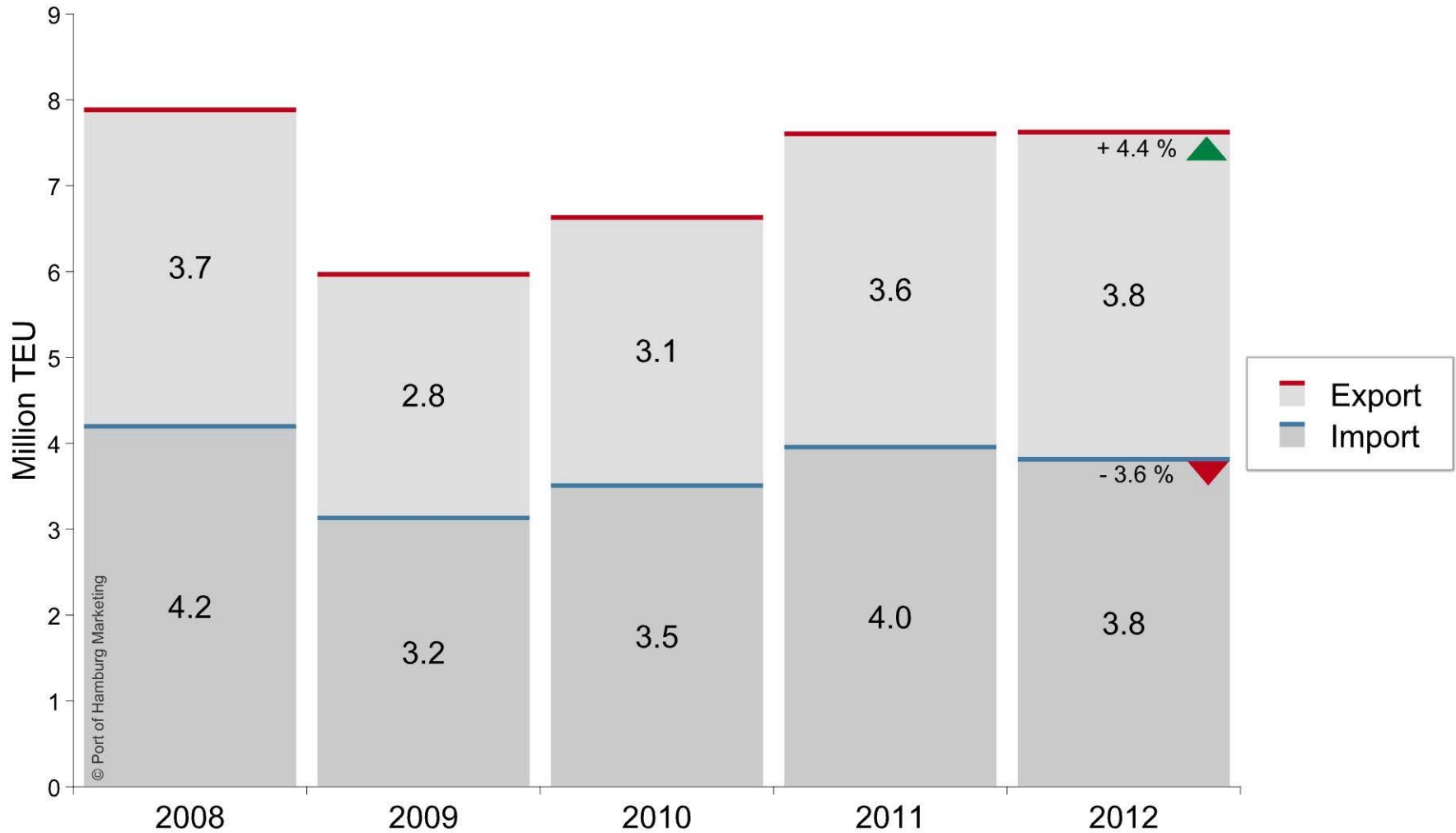
Hamburg - Handling of Seaborne Cargo



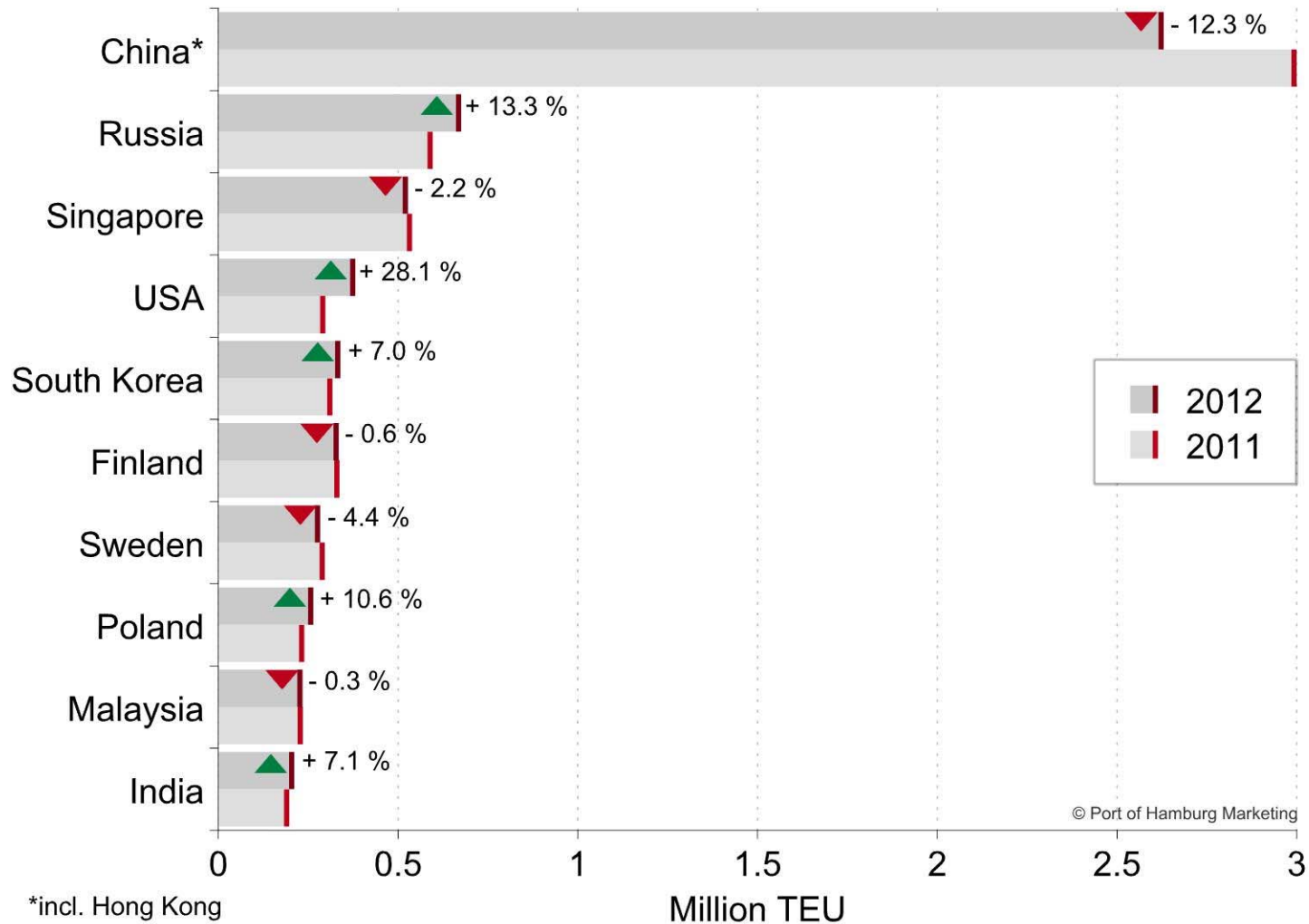
Bremerhaven 84 mio t, Wilhelmshaven 26.6 mio t



Container Handling, Full Container



Top 10 - Main Trading Partners of Hamburg





2012
430.000 passengers (2011:
314,500)

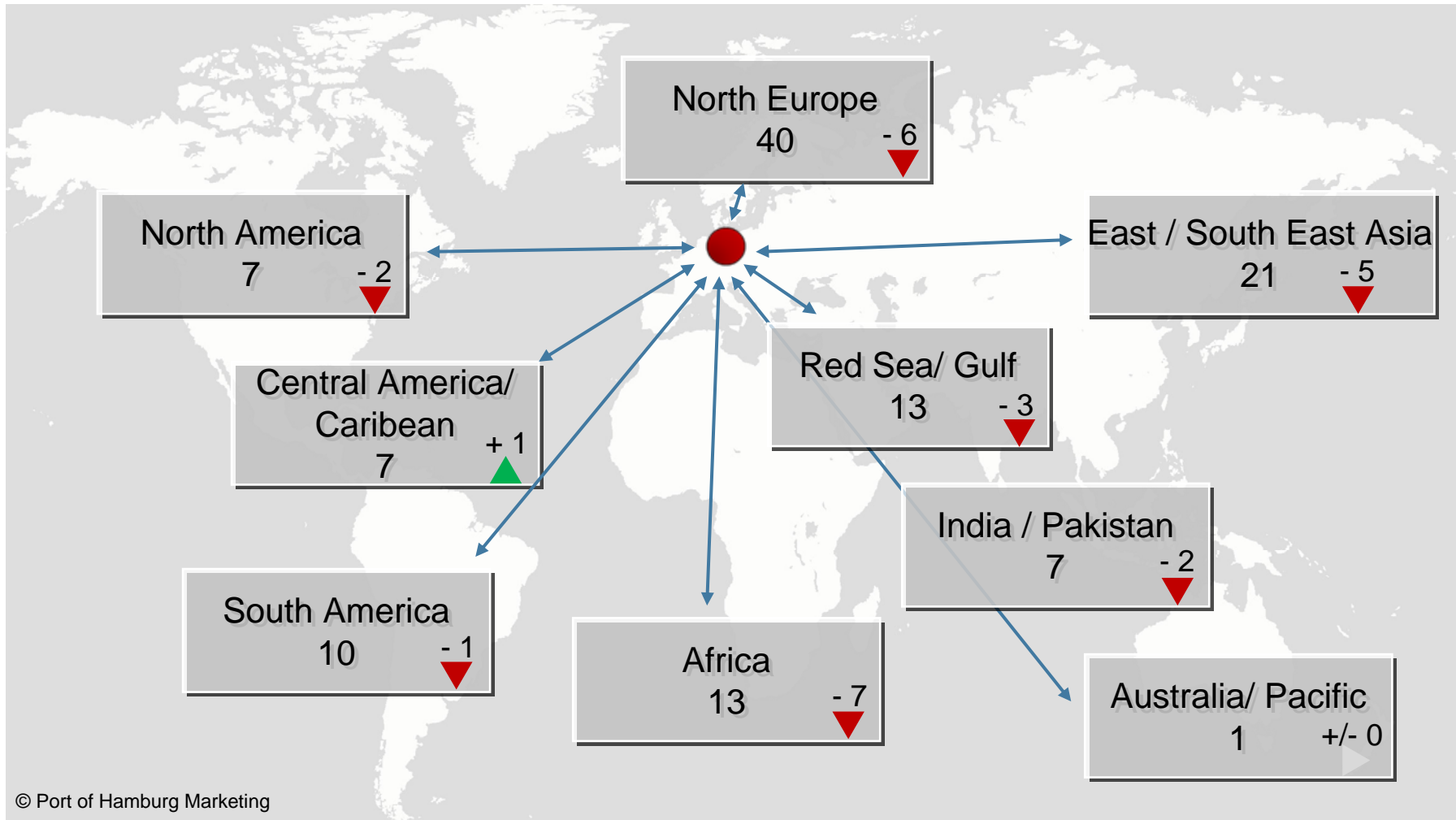
160 Arrivals of Cruise ships

Expectations for 2013:
500.000 passengers
173 calls

Liner Services by Relation



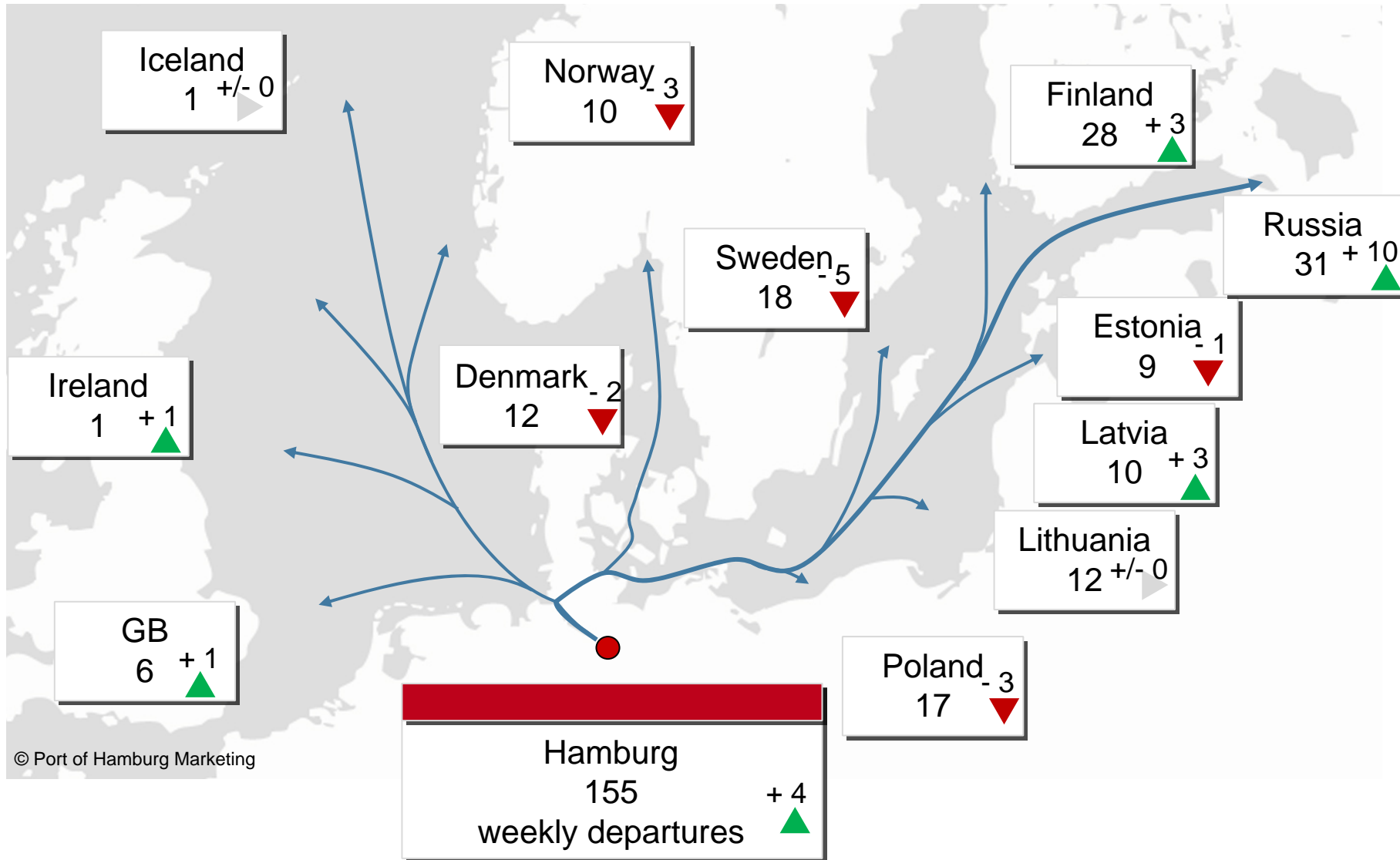
via Hamburg, Quantity (2012)



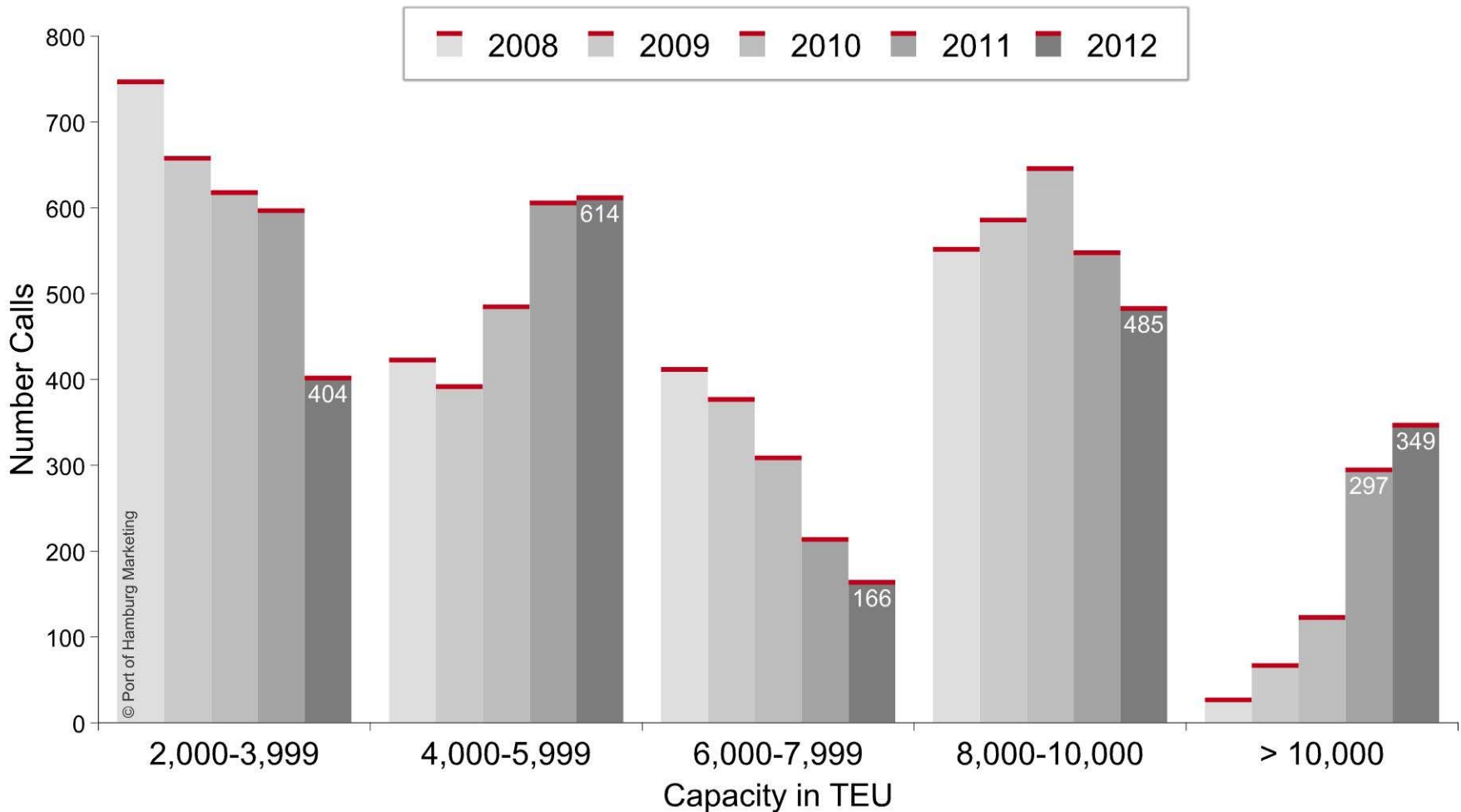
Port of Hamburg Feeder Connections



in 2012



Calls at the Port of Hamburg increases





**Thank you for your
attention!**